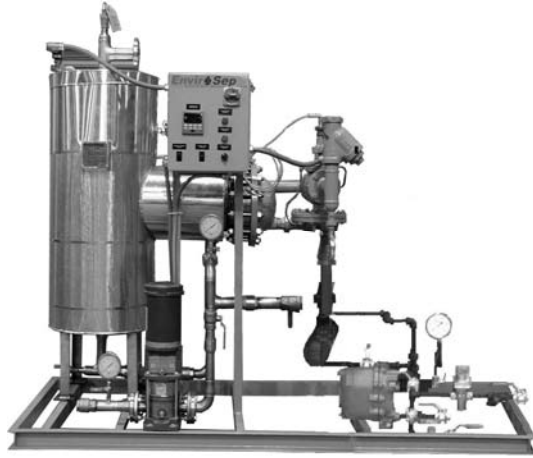


**Model #
NSIWH**

Negative Pressure Semi-Instantaneous Water Heater

Closed Loop Steam-to-Hot Water



TYPICAL SPECIFICATIONS	
Steam Pressure	5 to 150 psig
Hot Water Temperature	50 to 200 deg F
Standard System Flow Rate	5 to 500 GPM (0.3 to 30 LPS)
Standard Power	460/3/60 V (Other Voltages Available)
Dimensions	Based Upon Customer Requirements
Working Pressure	100 to 150 psig (6.8 to 10.2 barg)
Working Temperature	< 250 deg F (< 121 deg C)

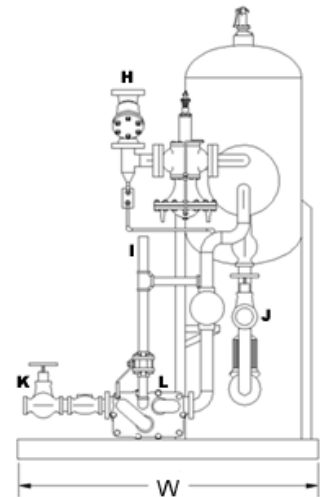
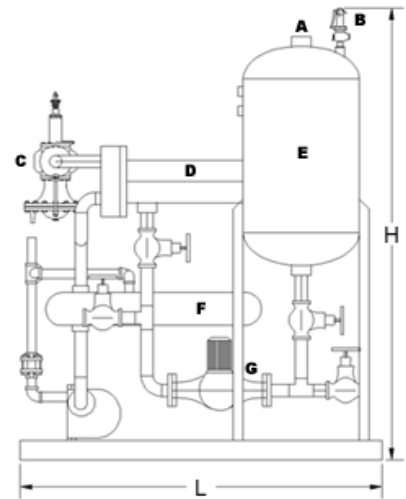


The *EnviroSep* Negative Pressure Semi-Instantaneous Steam-To-Water Heater is a manufactured, ready-to-install system designed to address the requirements of commercial potable water heating systems. Designed for high thermal efficiencies under varying load patterns, this system utilizes a fully modulating variable Pilot-operated Temperature Control Valve capable of handling steam pressures ranging from 5 to 150+ psig. This system operates **below 0 psig***, delivering a reduction in energy consumption of 15-20%. Capable of handling a wide range of water flowrates and temperatures, while being Custom-tailored to your specific site needs, makes this system an ideal choice for either New or Retrofit installations.

* Note: Under most service conditions which are typical to potable water service.

Standard Features:

- ASME, Stainless Steel Hot Water Buffer Tank, with U-stamp
- Self-contained, Pilot-operated or Pneumatic Modulating Steam Control Valves
- High Temperature Cut-off Switch, for Independent Source Steam Isolation
- Secondary High Temperature Purge System, with Blowdown Controls
- Internal Circulation Pump
- Inlet Steam Condensate Removal
- Pump/Trap with Receiver
- Float & Thermostatic Steam Trap
- Outlet Temperature Indication
- Safety Relief Valves



www.envirosep.com

P. O. Box 857 Georgetown, SC 29442 • Phone: 843-546-7400 Fax: 843-546-7407

COPYRIGHT © 2008 by EnviroSep

Sep
Enviro