

VCP &  
CPT

## Vented Steam Powered Pump and Closed Pump-Trap Packages

Regardless of system size, temperature, pressure, fluid medium, or available floor space, **EnviroSep** can service all of your specialized needs.



*EnviroSep Model VCP and CPT* Pump Packages are manufactured, ready-to-install systems. The Model VCP is for applications requiring a Vented Receiver, while the Model CPT operates within a closed loop system utilizing a both a condensate pump, and a condensate trap. Both systems utilize steam power in lieu of electric motors, eliminating the need for wiring motors, starters, and controls; as well as reducing operating costs. The steam-powered package is also capable of operation in flammable environments.

Our pumps employ a float operated snap-acting mechanism with no external seals or packing, which eliminates any required seal maintenance. All internal pump components and mechanism are constructed of stainless steel.



Optional



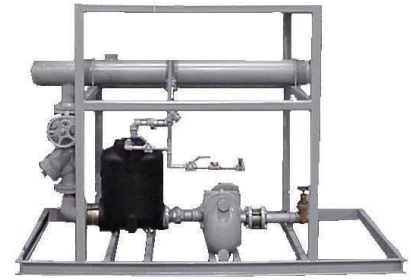
Optional



Optional



Optional



### Standard Features:

- All Welded Construction per ASME Section IX.
- High Temperature Coating
- Hydrostatically Tested Per B31.3.
- All Components Rated Per Service Needs



### Optional Features:

- B31.3 Compliant Construction.
- ASME Process Piping Certified.
- Factory Installed Insulation and Removable Blankets.



EnviroSep

[www.envirosep.com](http://www.envirosep.com)

P. O. Box 857 Georgetown, SC 29442 • Phone: 843-546-7400 Fax: 843-546-7407

COPYRIGHT © 2008 by EnviroSep

