

Vented Condensate Pump Package

(Steam Pressure-Powered)

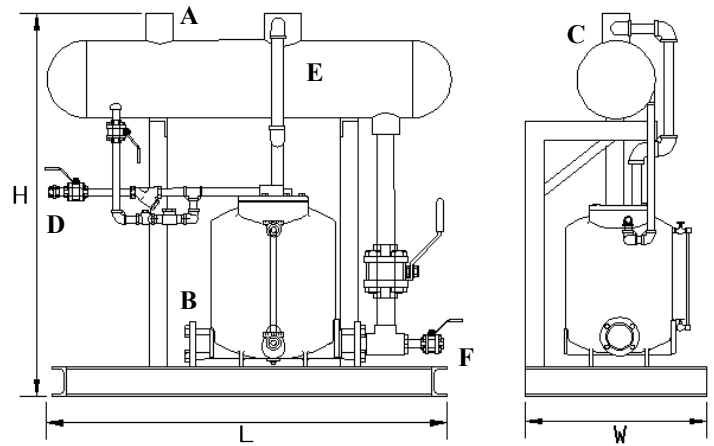
The Model VCP-2, Vented Condensate Pump Package is a manufactured, ready-to-install system featuring a Steam-Powered Condensate Pump. Designed for efficient pumping of condensate, VCP-2 utilizes steam power in lieu of electric motors, eliminating the need for wiring motors, starters, and controls. The steam-powered package is capable of operation in flammable environments. Operating by steam pressure versus electric power, reduces pumping costs. The pump employs a float operated snap-acting mechanism with no external seals or packing, which eliminates seal maintenance, which is required on conventional pumps. All internal pump components and mechanism are constructed of Stainless Steel.

MODEL VCP-2 CAPACITIES

Steam Pressure (psig)	Discharge Head (psig)	Flow Rate (lbs. / hr.)
125	15	11,100
125	40	9,200
125	60	7,800
125	80	6,000
125	100	4,700
125	115	3,800
100	15	10,500
100	40	8,200
100	60	6,100
100	80	5,000
75	15	10,300
75	40	7,200
75	60	4,300
50	10	9,700
50	25	7,400
50	40	4,100
25	5	9,600
25	10	7,800
25	15	6,000
10	2	8,100
10	5	5,300
5	2	4,300

CONDITIONS OF OPERATION

Max. Allowable Pressure / Temperature:	125 psig / 450 °F
Discharge rate per cycle:	7.1 gal.
Max. instantaneous discharge rate:	90 gpm
Min. Motive Pressure:	5 psig
Steam Consumption:	3 lbs. per 1000 lbs. of liquid pumped
Compressed Air Consumption:	100 SCF per 1000 lbs. of liquid pumped



Legend:

Approximate Dimensions: 55"H x 40"L x 26"W

- A. Condensate Inlet 2" NPT
- B. Condensate Discharge 2" NPT
- C. Vent 3" NPT
- D. Steam Inlet ½" NPT
- E. Receiver Tank 12" x 36"
- F. Drain ½" NPT

STANDARD CONSTRUCTION

- Fabricated Angle Iron Frame
- Fabricated Steel Tank
- Bronze Ball Valves
- Stainless Steel Thermodynamic Steam Trap
- Cast Iron Pump with Gauge Glass, and Stainless Steel internal components and Check Valves
- Hydrostatically Tested
- High Temperature Industrial Enamel Paint

PACKAGE OPTIONS

- Additional / Oversized Condensate Inlet connection(s)
- Oversized Condensate Receiver
- Oversized Atmospheric Vent(s)
- Carbon Steel 3-piece Ball Valves
- Overflow Connection
- Forged Steel Gate Valves
- Digital Cycle Counter to monitor pumping cycles
- Low-profile design for height restricted applications
- All Welded piping
- Fabricated Square Tubing Frame

Regardless of system size, temperature, pressure, fluid medium, or available floor space, **EnviroSep** can service all specialized needs.

EnviroSep • Fluid & Heat Recovery Systems

A Division of TMT, Inc.

PO Box 857 • Georgetown, SC 29442

Phone (843) 546-7400 / Fax (843) 546-7407

www.envirosep.com