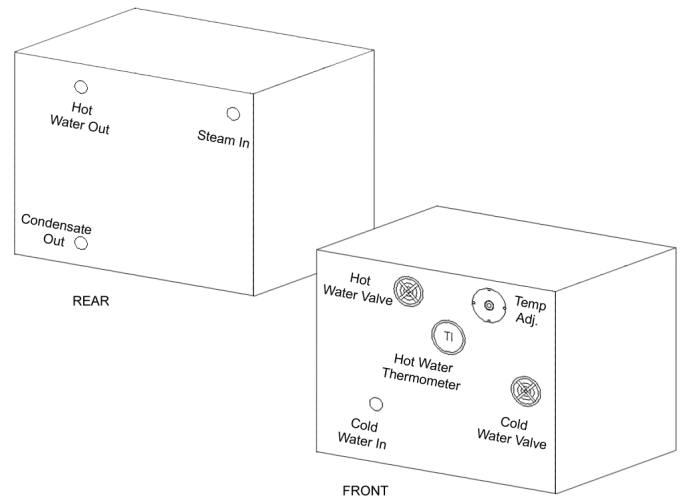


## Instantaneous Steam-To-Water Heater Model IWH

The Model **IWH**, Instantaneous Steam-To-Water Heater is a simple and accurate manufactured, ready-to-install system designed to address the requirements of commercial potable water heating systems. Designed to utilize steam as the heat source, the steam is supplied to the heater at a predetermined 2 to 60 psig (depending on required output). Blended Cold Water and Hot Water (Loop) Return is supplied to the heater and the Hot Water Supply is set through a manual Temperature Control Valve. The Model **IWH** is constructed of Stainless Steel, Copper, and Bronze components suitable for Domestic Water use. Capable of handling a wide range of water flowrates and temperatures, while being Custom-tailored to your specific site needs, makes this system an ideal choice for either New or Retrofit installations.



### Legend:

- A. Hot Water Control Valve
- B. Cold Water Control Valve
- C. Cold Water Inlet
- D. Blended Water Outlet
- E. Steam Inlet
- F. Condensate Outlet
- G. Blended Water Thermometer

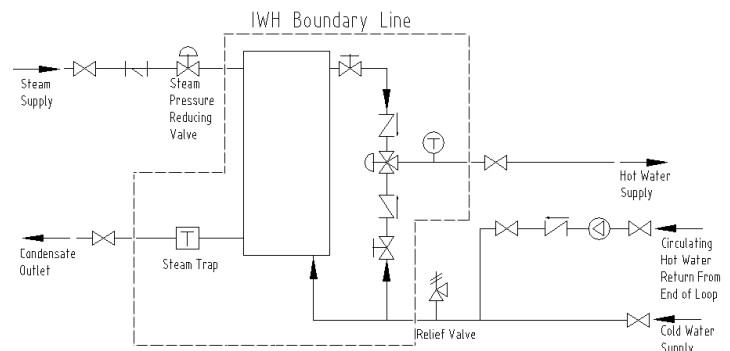
### STANDARD CONSTRUCTION

- Enamel-coated Steel Housing
- Bronze Gate Valves
- Stainless Steel Heater Surface
- Float & Thermostatic Steam Trap with Stainless Steel Internal Parts
- All Copper piping
- Hydrostatically Tested

### PACKAGE OPTIONS

- Bronze Ball Valves
- Digital Temperature Indicator w/ adjustable over-temp cutout
- Modulating Steam Control Valve
- Circulator Pump w/ Isolation Valves
- Digital, Pneumatic Temperature Control Valves
- Steam Pressure Reducing Valve w/ Y-Strainer
- Relief Valve
- Pre-piped Circulator / Make-up Assembly
- Steam-powered Condensate Pump

### TYPICAL PIPING ARRANGEMENT



Regardless of system size, temperature, pressure, fluid medium, or available floor space, **EnviroSep** can service all specialized needs.