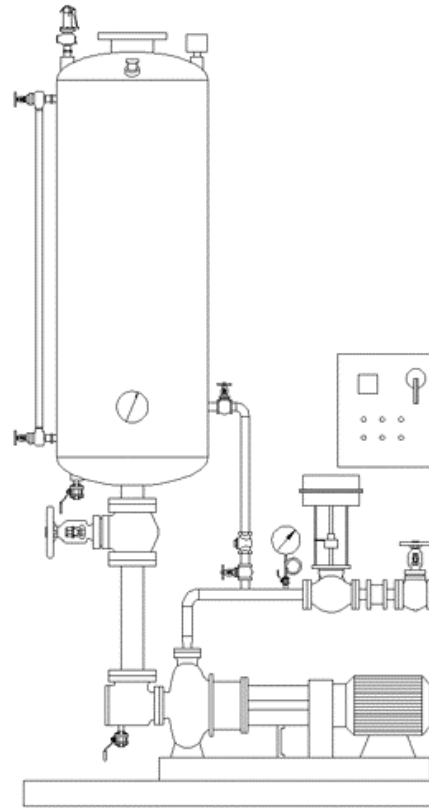


## Condensate Pump/Pot Packaged Pumping System (Base-Mounted End-Suction Centrifugal Pump)

The Model CP-60, Condensate Pump/Pot, Packaged Pumping System, is a manufactured, ready-to-install system designed for installation on process heat transfer sources. The Condensate Pump/Pot, Packaged Pumping System allows the heat transfer source to operate at optimum conditions by efficiently removing condensate, increasing the heat transfer efficiency. The result is substantial savings in energy costs at attractive pay-back periods because there is no Flash Steam Loss. Designed for efficient pumping of condensate, CP-60 is not vented to atmosphere, therefore there is no additional piping needed for a large vent. The CP-60 utilizes an End-suction, Base-mounted, ANSI rated, Centrifugal Pump which offers premium pumping of process fluids. The Condensate Pump/Pot is controlled by a proportional level transmitter, which is accessible through top entry, to modulate the discharge control valve, permitting continuous removal of condensate proportional to actual steam consumption. A UL-Listed, Industrial Control Panel is prewired to all electrical sources. The system carries as standard a UL-Listing as a Packaged Pumping System.



### Legend:

- Approximate Dimensions: 158”H x 78”L x 48”W
- A. Condensate Inlet 10” FLG
  - B. Condensate Discharge 2” NPT
  - C. Relief Valve Outlet 4” NPT
  - D. Pump Drain ½” NPT
  - E. Receiver Tank 36”x 96”
  - F. Tank Drain ½” NPT

### MODEL CP-60 SAVINGS

System Steam Pressure (psig)	Energy Savings (MM Btu/yr.)	Potential Savings ( \$ /yr.)
125	36,177.12	<b>180,885.60</b>
100	32,510.52	<b>162,552.60</b>
80	28,599.48	<b>142,997.40</b>
60	24,444.00	<b>122,220.00</b>
40	19,066.32	<b>95,331.60</b>
30	15,888.60	<b>79,443.00</b>
20	11,977.56	<b>59,887.80</b>
15	9,777.60	<b>48,888.00</b>
10	7,088.76	<b>35,443.80</b>
5	4,155.48	<b>20,777.40</b>

#### NOTES:

- Savings are based on max. potential savings at max. pump capacity on 8400 hr./yr. of continuous operation
- Steam costs at \$5.00/MM Btu
- Savings based on approx. calculations.
- Savings are based on the elimination of Flash Loss; Actual savings are derived by actual site conditions.

### CONDITIONS OF OPERATION

Max. Allowable Pressure / Temperature:	150 psig / 450 °F
Modulating Discharge Rate:	60 gpm @ 115 ft. 30,000 lb/hr @ 115 ft.
Max. Instantaneous Discharge Rate:	180 gpm @ 95 ft.
Electrical Requirements:	15.1 FLA-480 Volts 29.2 FLA-240 Volts
Minimum Recirculation Flow Rate:	45 gpm @ 119 ft.

## MODEL CP-60 CAPACITIES

Steam Pressure (psig)	Control Valve (in.)	Discharge Head (psig)	Flow Rate (lbs. / hr.)
15	1 1/4	15	66,175
15	1 1/4	40	46,793
15	1 1/4	50	34,245
15	1	40	29,276
30	1	15	47,207
30	1	40	37,032
30	1	60	26,186
30	1 1/4	70	29,594
60	1	15	57,071
60	1	40	48,989
60	1	60	41,403
60	1 1/4	100	29,594
100	3/4	50	37,034
100	3/4	75	32,072
100	3/4	125	18,517
125	3/4	75	37,034
125	3/4	100	32,072
125	3/4	125	26,187
150	3/4	100	37,034
150	3/4	150	26,187

### Note:

1. The above capacities are for reference only; consult factory for desired capacity based on actual site conditions.

## STANDARD CONSTRUCTION

- Fabricated Channel and Angle Iron Frame
- Fabricated Steel Tank with Cast Iron Gate Valve on Pump Suction
- Thermostatic Air Vent and Vacuum Breaker
- 4 - 20 ma Level Transmitter; Level Gauge Glass with Isolation Valves
- ASME Section IX Certified Welding
- Base-mounted, End-suction, Centrifugal Pump; Pump Suction Diffuser with Strainer; Pump Discharge Pressure Gauge; Low-flow, Auto-recirculation
- UL-Listed Industrial Control Panel with Single-point Power connection; Level Controller with Digital LCD Display; NEMA 12 Enclosure
- Tank Thermometer
- Pressure Relief Valve
- Hydrostatically Tested
- High Temperature Industrial Enamel Paint

## PACKAGE OPTIONS

- Additional / Oversized Condensate Inlet connection(s)
- Oversized Condensate Receiver
- Tank-mounted Pressure Gauge
- Reflex Level Gauge Glass
- Forged Steel or Cast Steel Gate Valves
- Low-profile design for height restricted applications
- Condensate Discharge Flowmeter with Panel-mounted Digital Display
- Fabricated Square Tubing Frame
- Duplex Pump Design with Automatic Secondary Pump Start on Primary Pump Failure
- NEMA 4 or 4X Enclosure
- All Stainless Steel Construction

Regardless of system size, temperature, pressure, fluid medium, or available floor space, **EnviroSep** can service all specialized needs.

**EnviroSep** • Fluid & Heat Recovery Systems  
 A Division of TMT, Inc.  
 PO Box 857 • Georgetown, SC 29442  
 Phone (843) 546-7400 / Fax (843) 546-7407  
[www.envirosep.com](http://www.envirosep.com)