

**Model #  
IWH-C**

## Instantaneous Water Heater

Custom-Engineered

Unfired Steam-to-Hot Water



### TYPICAL SPECIFICATIONS

Steam Pressure	5 to 300 psig
Hot Water Temperature	50 to 250 deg F
Standard System Flow Rate	5 to 500 GPM (0.3 to 30 LPS)
Standard Power	460/3/60 V (Other Voltages Available)
Dimensions	Based Upon Customer Requirements
Working Pressure	100 to 300 psig (6.8 to 20.4 barg)
Working Temperature	< 550 deg F (< 290 deg C)

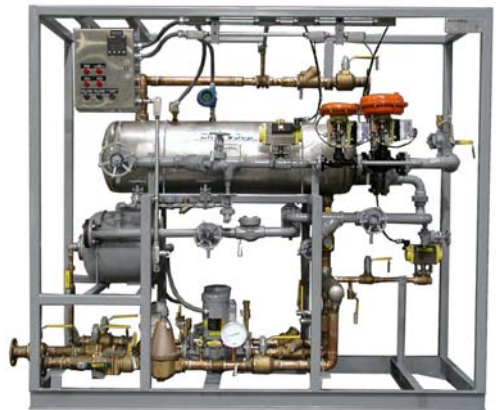
### Options:

- NEMA 7/9 Explosion-proof Rating
- Plate & Frame Heat Exchangers
- System Recirculation Pumps
- Stainless Steel Main Headers
- Multistaged, Variable Speed Pumps
- Auto System Flow Activation
- Steam-powered or Electric Condensate Pumps

*EnviroSep IWH-C*, Instantaneous Water Heaters may be Custom-engineered to satisfy requirements unique to more sophisticated, industrial applications. Virtually any system configuration may be engineered by the EnviroSep Team, utilizing process parameters provided by the client or end-user. Once the process variables are analyzed, General Layout Drawings are prepared for approval. Electrical controls may be provided with PLC programmable controllers or simple, relay logic. *EnviroSep* maintains flexibility to ensure all special needs are incorporated into the final system design.

### Standard Features:

- Instantaneous Vertical Heater, with ASME Stainless Steel Shell & Copper-Nickel Tubes
- Self-contained, Pilot-operated Steam Control Valves
- High Temperature Cut-off Switch, for Independent Source Steam Isolation
- Secondary High Temperature Purge System, with Blowdown Controls
- Internal Circulation Pump
- Inlet Steam Condensate Removal
- Float & Thermostatic Steam Trap
- Outlet Temperature Indication
- Safety Relief Valves
- Removable Tube Section



EnviroSep

[www.envirosep.com](http://www.envirosep.com)

P. O. Box 857 Georgetown, SC 29442 • Phone: 843-546-7400 Fax: 843-546-7407

COPYRIGHT © 2008 by EnviroSep